



Wireless Technology Risks & Safer Municipal Solutions

La Plata County Educational Forum with Cece Doucette

March 8, 2021

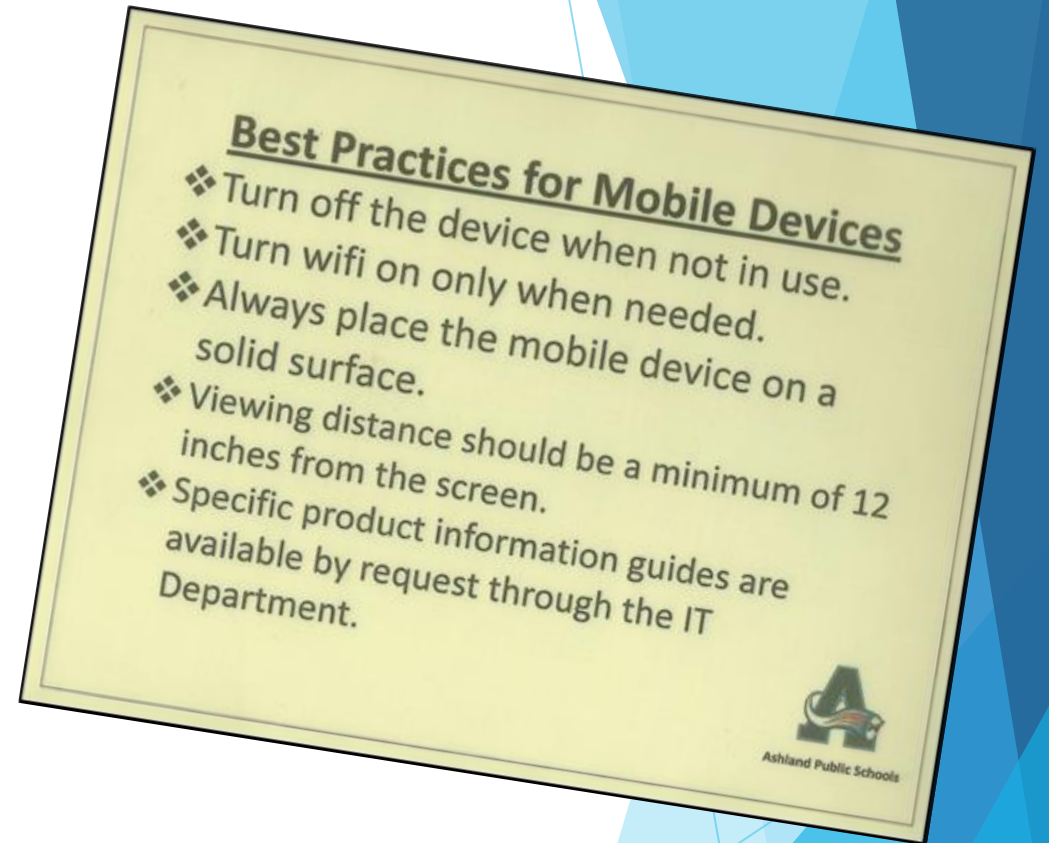
Cece Doucette, MTPW



- ▶ Helped Ashland, MA become first-in-nation with [Best Practices for Mobile Devices](#), 2014
- ▶ Introduced [legislation](#) in MA & testified in NH
- ▶ Co-founder, [Wireless Education](#), educational non-profit
- ▶ Co-founder, [Massachusetts for Safe Technology](#)
- ▶ [Co-Chair, Technology Panel, Health in Buildings Roundtable Conference @ NIH](#)
- ▶ Speaker: EMF Medical Conference [2021](#)

Overview

- ▶ Legal Fine Print
- ▶ Science
- ▶ Conflicts of Interest
- ▶ Municipal Points of Emission
- ▶ Solutions
- ▶ La Plata County Next Steps



The Legal Fine Print

▶ See the Fine Print

▶ Settings

▶ General

▶ (About)

▶ Legal & Regulatory

▶ RF Exposure

▶ ALL wireless devices, “smart” technology, Internet of Things (IoT)

▶ Ashland, MA: detection meter in public libraries



Science: Long-term Effects

▶ Child & Adult Cancers (Farver)

▶ DNA Damage

▶ Infertility

▶ Neurotoxicity

➤ ADD/ADHD

➤ Autism

➤ Alzheimer's

▶ Children are especially vulnerable (Andrea)

National Toxicology Program
 Handoperated at the National Institute of Environmental Health Sciences NTP/NHS

Cell Phone Radio Frequency Radiation Studies

Cell phones are used by 95% of American adults.¹ Given the large number of users, any harmful effects of public health concern.

Cell phones use radio frequency radiation (RFR) to transmit signals. The U.S. Food and Drug Administration (FDA) nominated RFR for study by the National Toxicology Program (NTP), due to widespread human exposure and limited information about the potential health effects of long-term use of cell phones.

What did NTP study?
 NTP conducted toxicology studies in rats and mice to help clarify potential health hazards, including cancer risk, from exposure to RFR used in 2G and 3G cell phones. 2G and 3G networks were standard when the studies were designed and are still used for phone calls and texting.

The 530 million NTP studies took more than 10 years to complete and are the most comprehensive assessment to date of health effects in animals exposed to RFR. The results will help guide other studies of newer technologies.

What did the studies find?
 The NTP studies found that exposure to high levels of RFR, like that used in 2G and 3G cell phones, was associated with:

- **Clear evidence of tumors in the hearts of male rats.** The tumors were malignant schwannomas.
- **Some evidence of tumors in the brains of male rats.** The tumors were pheochromocytomas.
- **Some evidence of tumors in the adrenal glands of male rats.** The tumors were pheochromocytomas, also known as paragangliomas, which are also known as paragangliomas, which are also known as paragangliomas. The conclusions were based on the NTP four categories of evidence that a substance may cause cancer:
 - Clear evidence (highest)
 - Some evidence
 - Equivocal evidence
 - No evidence (lowest)

If you are concerned about potential health risks from RFR, the FDA suggests the following tips:

- Use speaker mode or a headset to place more distance between your head and the cell phone.
- Reduce the amount of time spent using your cell phone.

PO Box 12233 • Research Triangle Park, NC 27709
 Phone: 919-641-3343 • <https://ntp.niehs.nih.gov>
 November 2018

Printed on recycled paper

ARTICLE IN PRESS
 Environmental Research (in press)
 Contents lists available at ScienceDirect
 Environmental Research
 journal homepage: www.elsevier.com/locate/ersol

Report of final results regarding brain and heart tumors in rats exposed from prenatal life until natural death to a radiofrequency field representative of a 1.8 GHz GSM mobile phone

L. Faliconi, L. Bua, E. Tibaldi, M. Lauriola, L. De Angelis, F. Gnudi, D. M. F. Manservigi, I. Manzoni, I. Menghetti, R. Monella, S. Panzacchi, D. Spina

Chemical-Biological Interactions (2018), *in press*, <https://doi.org/10.1016/j.cbi.2018.06.007>

ARTICLE INFO

ABSTRACT

Background: In 2011, IARC classified radiofrequency radiation (RFR) as a possible human carcinogen. In 2016, the NTP published the final results of its study on the potential of RFR to cause brain and heart tumors in rats. Objectives: The National Toxicology Program (NTP) performed a study to evaluate the carcinogenic potential of RFR in rats. Methods: The NTP conducted a study on the carcinogenic potential of RFR in rats. Results: The NTP found that exposure to high levels of RFR was associated with an increase in the incidence of brain and heart tumors in rats. Conclusions: The NTP found that exposure to high levels of RFR was associated with an increase in the incidence of brain and heart tumors in rats.

1. Introduction

Early warnings on the potential carcinogenic risks of mobile phone radiofrequency radiation (RFR) issued in the early 2000s when, for the first time, it was published that people using mobile phones had a significant increased risk to develop brain tumors (Gliomas) and brain tumors (Falcioli et al., 2010, 2002). In 2011, the International Agency for Research on Cancer (IARC) classified RFR as possible human carcinogen (Group 2B) based on limited evidence from human epidemiological studies (Falcioli et al., 2011; IARC, 2011). Two studies, however, showed that the risk to develop brain tumors and brain tumors was increased in people with the highest cumulative use of mobile phones, in people who had used mobile phones for

Please cite this article as: Faliconi, L., *Environmental Research* (2018), <https://doi.org/10.1016/j.cbi.2018.06.007>

Children absorb more radiation than adults

5 year old 10 year old Adult

Courtesy Om P. Gandhi and Green America

Science: Short-term Effects

- ▶ Electromagnetic Sensitivity/EMS (Symington, Shisler)
 - Insomnia
 - Headaches
 - Nosebleeds/earbleeds
 - Fatigue
 - Pain
 - Skin abnormalities
 - Irregular heartbeats
 - Cognitive impairment
 - Anger, behavior issues
 - Anxiety, depression, suicidal ideation

The image contains two overlapping documents. The top document is an infographic titled "Are your symptoms caused by your wireless devices?" with the subtitle "Common symptoms of Microwave Sickness/Electro-Sensitivity". It features a central silhouette of a human figure with arrows pointing to various body parts, each associated with a list of symptoms:

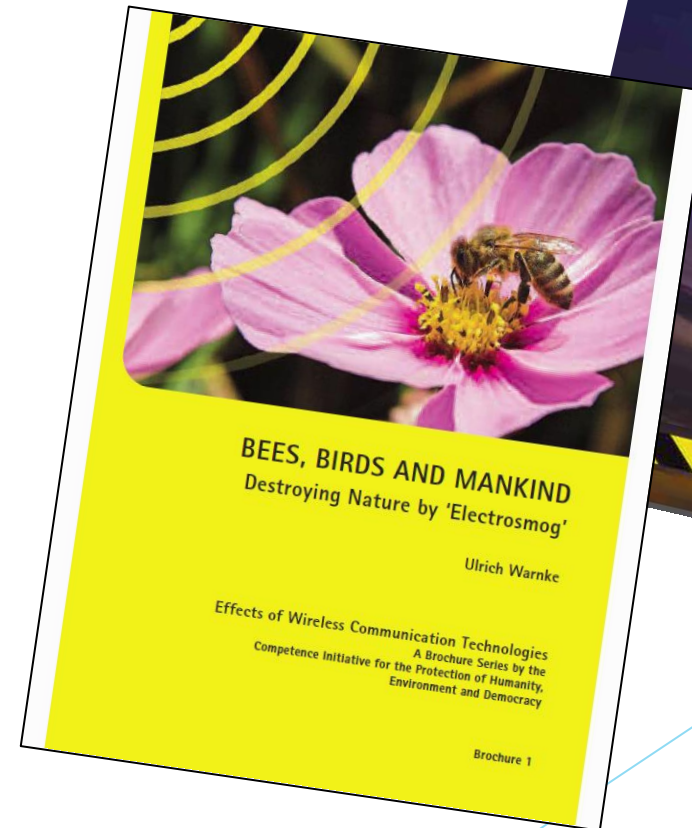
- Brain:** Headaches, Insomnia/Sleep Problems, Dizziness, Difficulty Concentrating, Memory Problems, Brain Fog, Fatigue
- Eye:** Pressure In/Behind Eyes, Eye Twitching, Deteriorating Vision, Vision Disturbances, Cataract
- Heart:** Palpitations, Arrhythmia, Chest Pain/Pressure, Difficulty Breathing, Low/High Blood Pressure
- Other:** Adrenal Problems, Digestive Problems, Weight Loss/Gain, Tingling, Dehydration
- Ears:** Tinnitus, Humming, Sharp Pain, Noise Sensitivity
- Skin:** Skin Rash, Itching, Burning, Facial Flushing
- Mood:** Irritability, Depression, Anxiety

At the bottom left of the infographic, it says "More information at www.WeAreTheEvidence.org".

The bottom document is a snippet from the *Journal of Chemical Neuroanatomy*, dated 2015. The article title is "Microwave frequency electromagnetic fields (EMFs) produce widespread neuropsychiatric effects including depression" by Martin L. Pall. The snippet includes the journal's Elsevier logo, the article title, author name, and the beginning of the abstract, which discusses the effects of microwave frequency electromagnetic fields on the brain and neuropsychiatric health.

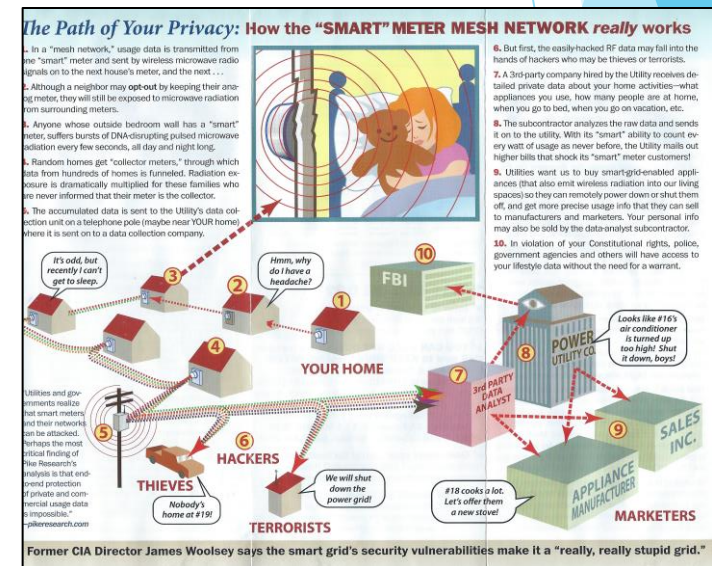
Science: Planetary Impact

- ▶ Pollinators
- ▶ Birds
- ▶ Energy consumption
 - Mineral extraction
 - Data warehouses
 - Networks
 - Personal devices
 - Streaming
 - Send/receive
 - Charging
 - Continuous app updates



Utility “Smart” Meters

- ▶ La Plata Electric Association [opt-out](#)
- ▶ Pulse radiation continuously
- ▶ Can hop on house wires/pipes
- ▶ Fires, explosions, improper grounding
- ▶ Data harvesting, privacy issues
- ▶ Leading cause of sudden onset microwave sickness
- ▶ [TedX Talk](#): Jeromy Johnson, engineer



Cell Towers

- ▶ Examine the non-industry funded science
- ▶ AntennaSearch.com



Understanding EMFs

Search this site

- Navigation
 - Introduction
 - The Science
 - Military Experts
 - Doubts
 - Cancers
 - Infertility
 - Impact on Children
 - Wi-Fi in Schools
 - Electrohypersensitiv... (EHS)
 - Utility "Smart" Meters
 - Cell Towers**
 - 5G & IoT
 - Planetary Impact
 - Legal Issues
 - Manufacturers
 - For Health Care Providers
 - For Engineers & Physicians
 - For Municipal Leaders
 - Media Limitations
 - World Response
 - Solutions
 - Massachusetts EMF Bills 2019-20
- Cell Towers
 - Cell Tower Scientific Studies

The following studies indicate cell towers are **biologically hazardous**:

- [Report of final results regarding brain and heart tumors in Sprague-Dawley rats exposed from prenatal life until natural death to mobile phone radiofrequency field representative of a 1.8 GHz GSM base station environmental emission](#) from the Ramazzini Institute in Italy concludes, "The RI findings on far field exposure to RFR are consistent with and reinforce the results of the [NTP study](#) on near field exposure, as both reported an increase in the incidence of **tumors of the brain and heart** in RFR-exposed Sprague-Dawley rats." This study, partially funded by the U. S. government, is the first large-scale study to show clear evidence of cancer risk from cell towers.
- [Epidemiological evidence for a health risk from mobile phone base stations](#) finds "**adverse neurobehavioral symptoms or cancer** in populations living **at distances < 500 meters from base stations.**" (1,640 feet)
- [Association of Exposure to Radio-Frequency Electromagnetic Field Radiation \(RF-EMFR\) Generated by Mobile Phone Base Stations with Glycated Hemoglobin \(HbA1c\) and Risk of Type 2 Diabetes Mellitus](#) indicates, "It is concluded that exposure to high RF-EMFR generated by MPBS is associated with **elevated levels of HbA1c**."

Report Viewer ...

Your AntennaSearch Report is ready!
(200 E Colfax Ave, Denver, CO 80203)

- Results Summary -

- Search Radius reduced to 1. miles
(High number of Antennas Detected!)
- 43 Tower** Structures Detected!
- 2 New Tower** Applications Detected as of 03/08/21!
- 873 Antenna** Locations Found!

- Detailed Results (Maps, Owners, etc.) -

Click for Tower Results --> [View Tower Results](#)

• Antenna Sites - (1101 E 2nd Ave, Durango, CO 81301)

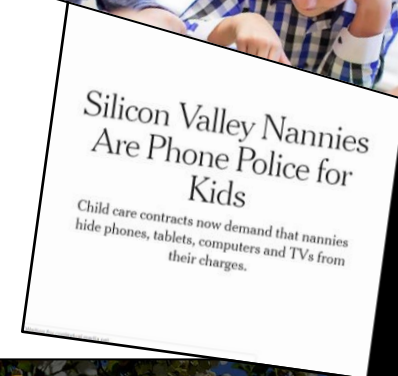
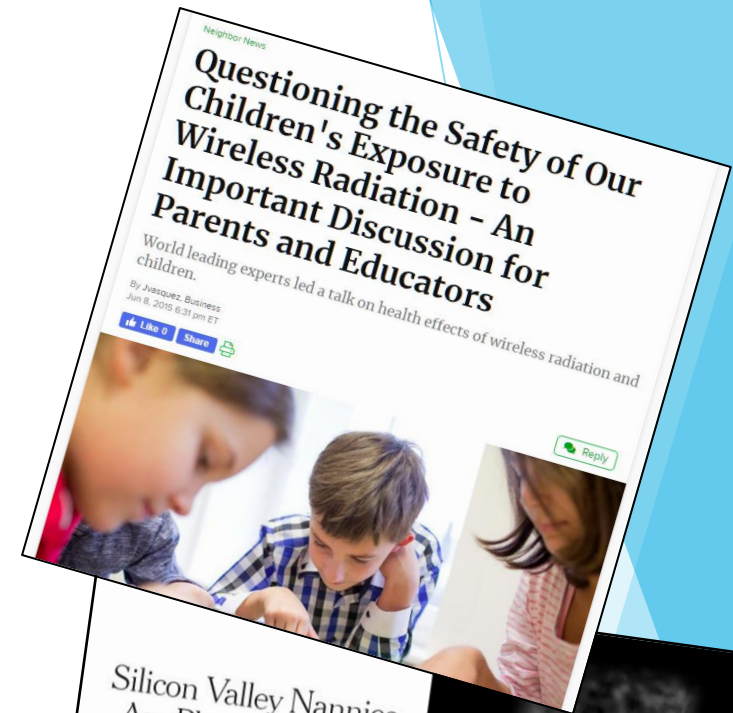
What is 5G?

- ▶ 5th Generation technology
- ▶ Promises faster entertainment downloads, smart cities, etc.
- ▶ Uses existing 3G, 4G wavelengths to penetrate buildings
- ▶ 5G is the *addition* of short millimeter waves, can't go through objects; clear-cutting trees
- ▶ Industry goal: millions of small cells at curb outside bedrooms in public access way, every 2-12 houses; already in Denver and elsewhere
- ▶ Thousands of 5G satellites in the sky
- ▶ Never tested for safety (Congressional hearing)
- ▶ ComputerWorld: 5G a Bad Joke



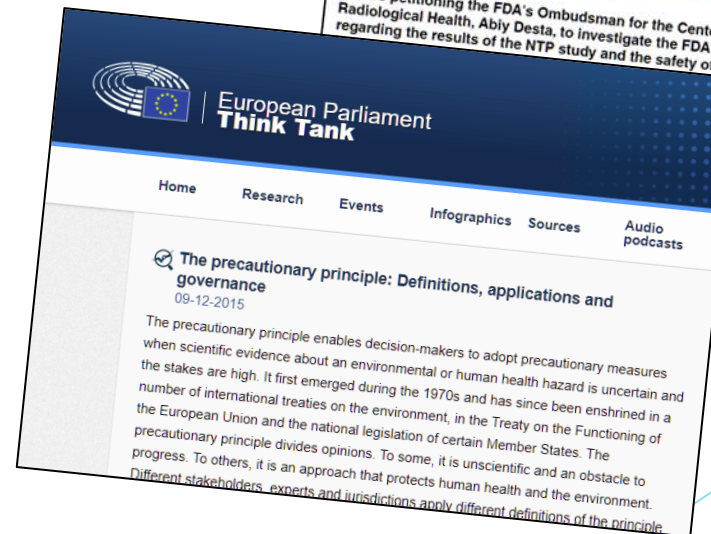
Schools

- Ashland, MA first in the nation: [Best Practices for Mobile Devices](#)
- Hosted expert panel: [Questioning the Safety of Our Children's Exposure to Wireless Radiation in School](#)
- [New York Times](#): Silicon Valley execs banning screens from their children
- [Maryland](#) first public health agency to recommend hard-wiring in schools
- U.S. Collaborative for High Performance Schools [low-EMF best practices](#)



Why Don't We Know?

- ▶ FCC: Captured Agency
- ▶ FDA: Conflict of Interest
- ▶ Precautionary Principle



A Word of Caution: Misleading “Trustworthy” Sources

▶ New York Times

- ▶ Article, [“The 5G Health Hazard that Isn’t”](#)
- ▶ Conflict of interest: [5G Verizon lab at NYT](#)
- ▶ [Ireland: Violation of truth & accuracy code](#)

▶ World Health Organization

- ▶ [False EMF information still posted](#)
- ▶ [2020: EMF investigation reopened](#)
- ▶ [Two WHO groups: One industry-influenced, one science-based](#)



Social Norm Change

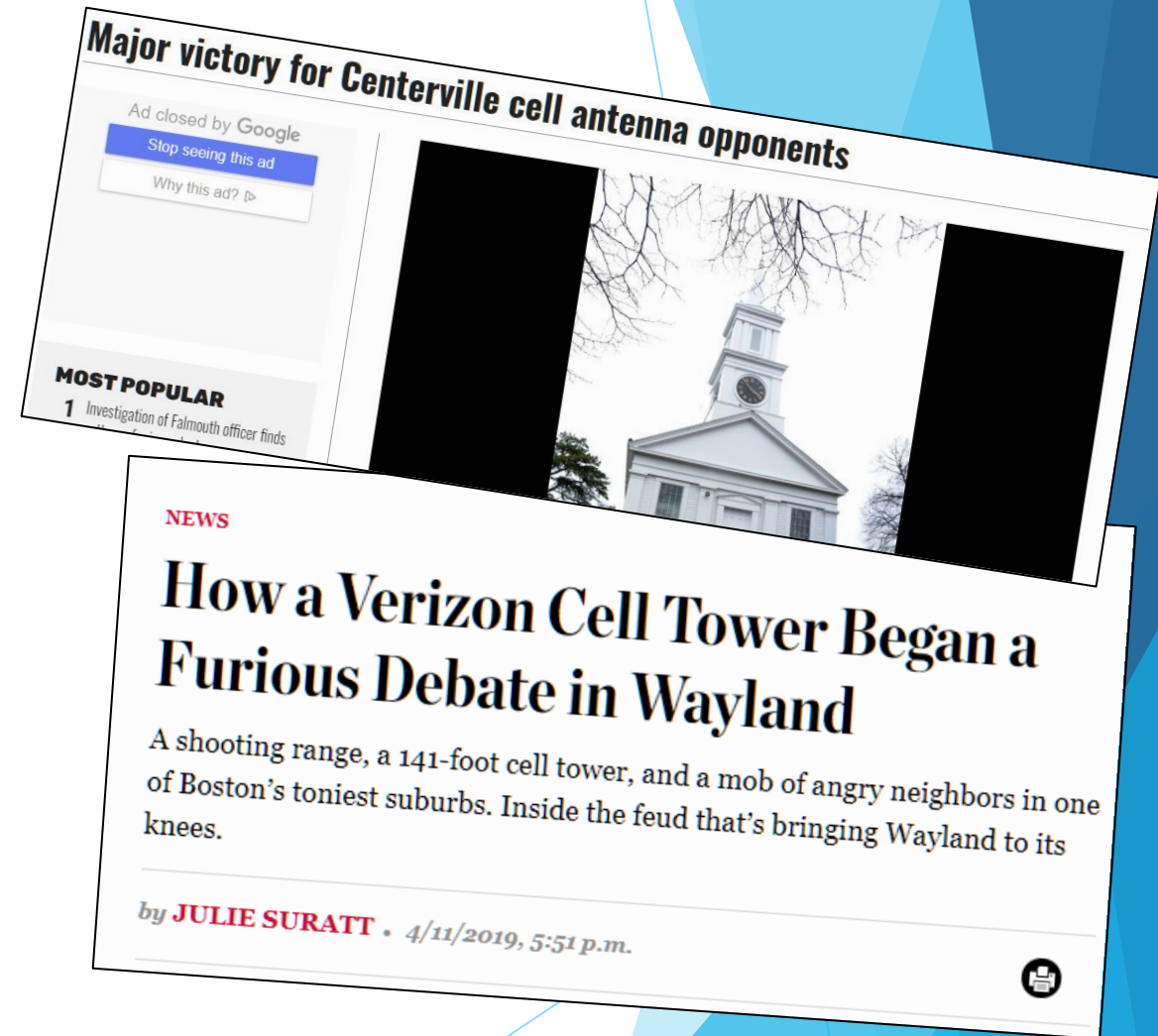
- ▶ Martin Luther King, Jr.
 - ▶ Public engages
 - ▶ Courts rule
 - ▶ Public policy enacted



Public Taking Action

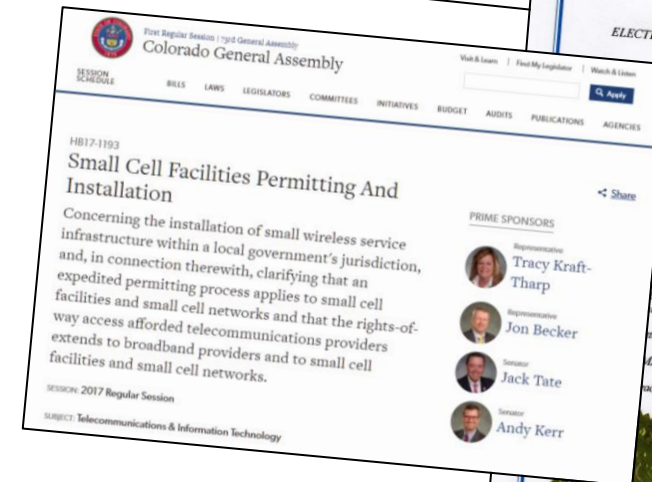
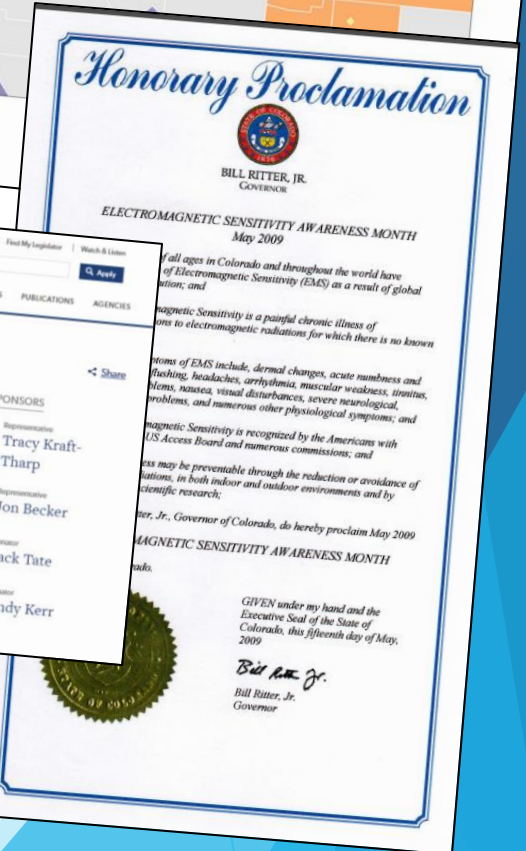
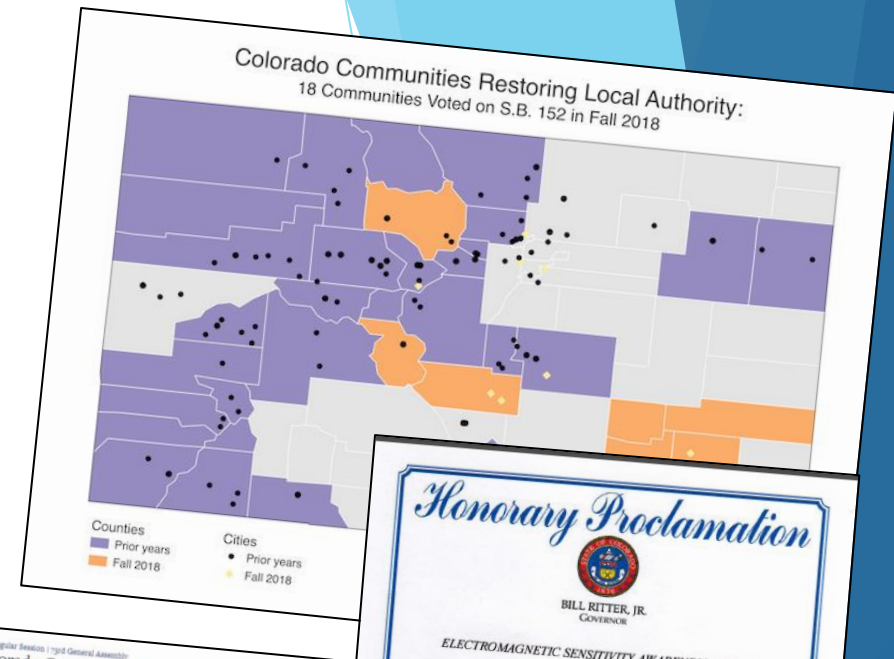
▶ Cell towers

- ▶ Shelburne, MA 1,500' setback in bylaw, 3,000' from schools
- ▶ Burlington small cell policy
- ▶ Holliston wireless antennas on power lines
- ▶ Wayland 900' setback in bylaw
- ▶ Dover-Sherborn Regional won
- ▶ Concord relocating tower
- ▶ Petersham AT&T height waiver denied



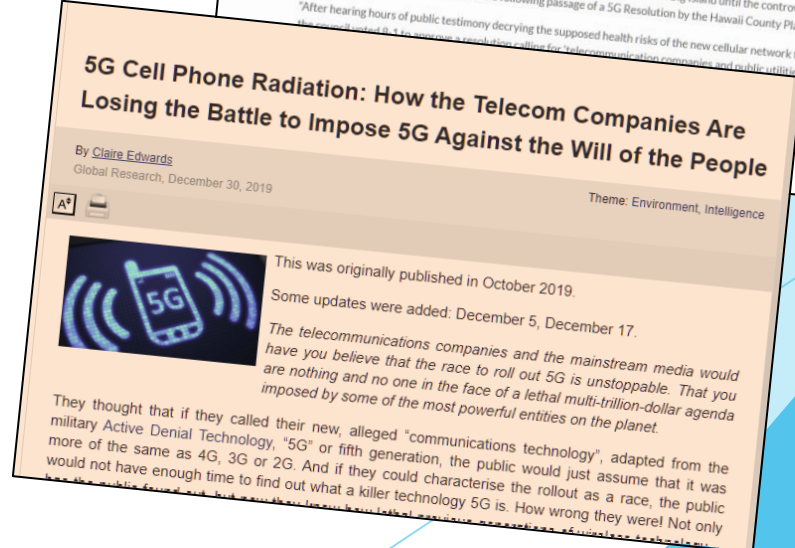
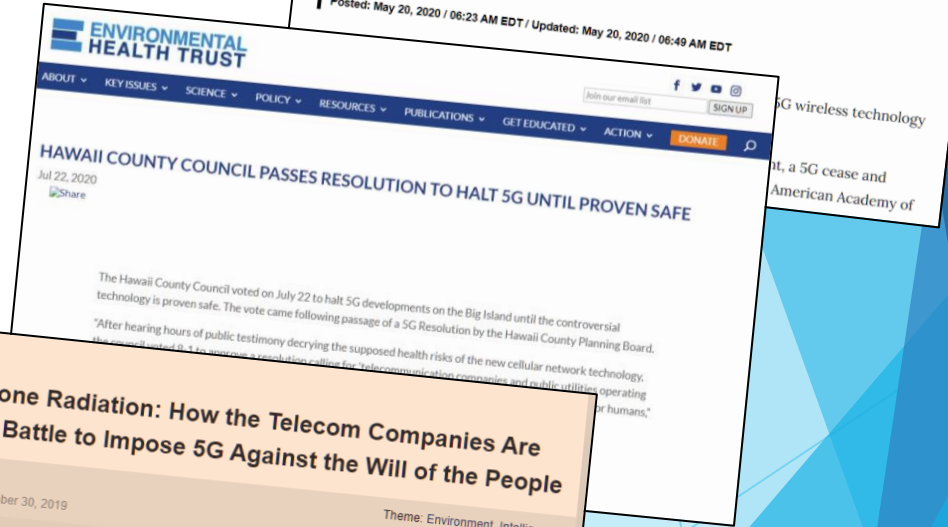
CO Taking Action

- ▶ Lakewood Broadband group code amended (Margolis)
- ▶ Larimer County [250' residential setback in telecom code](#)
- ▶ Fire stations refusing antennas
 - ▶ [IAFF Position Statement](#)
- ▶ Rural Electric Co-ops: Fiber-to-the-Premises (FTTP)
 - ▶ [Muninetworks.org map](#)
 - ▶ Proactive infrastructure for the future
- ▶ [Coloradans for Safe Technology](#)
 - ▶ Local control over 5G & all wireless facilities
 - ▶ Repeal ALEC bill CO 17-1193
- ▶ Governor Ritter and Hickenlooper's Proclamation: [EMS Awareness Month in May](#)
- ▶ Smart meter opt-out



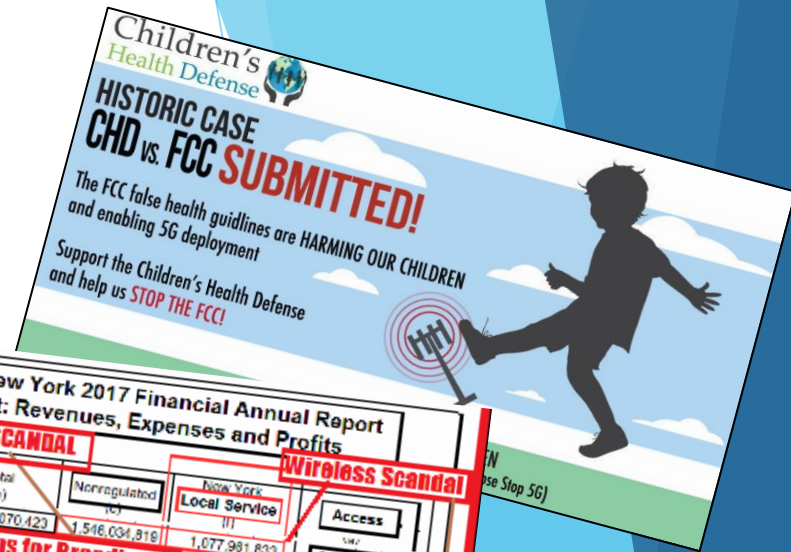
Public Servants Taking Action

- ▶ Easton, CT bans 5G
- ▶ Hawaii County bans 5G
- ▶ Bermuda temporary 5G moratorium
- ▶ Worldwide actions



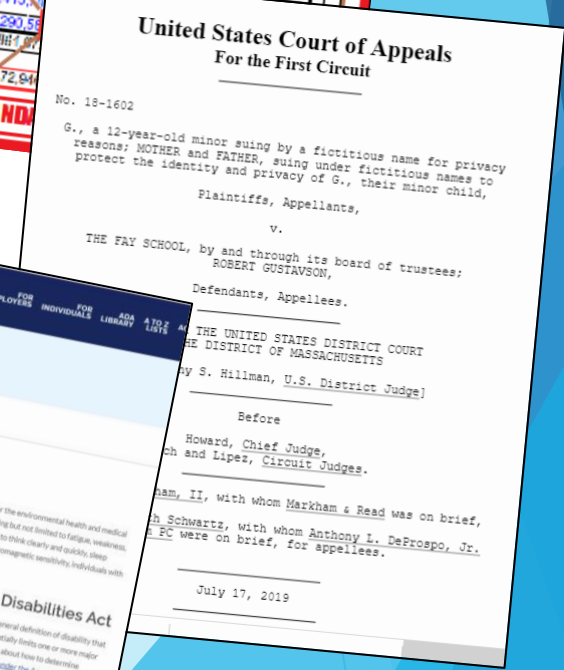
Legal Solutions

- ▶ FCC being sued:
 - ▶ Ignoring the science
 - ▶ [Environmental Health Trust](#)
 - ▶ [Children's Health Defense](#)
 - ▶ CHD [OTARD Rule](#)
 - ▶ [IRREGULATORS v. FCC](#) (\$500B)
- ▶ [ADA protections](#) (Symington)
 - ▶ [Fay School](#) & [LAUSD ADA](#): Court recognizes non-thermal biological effects



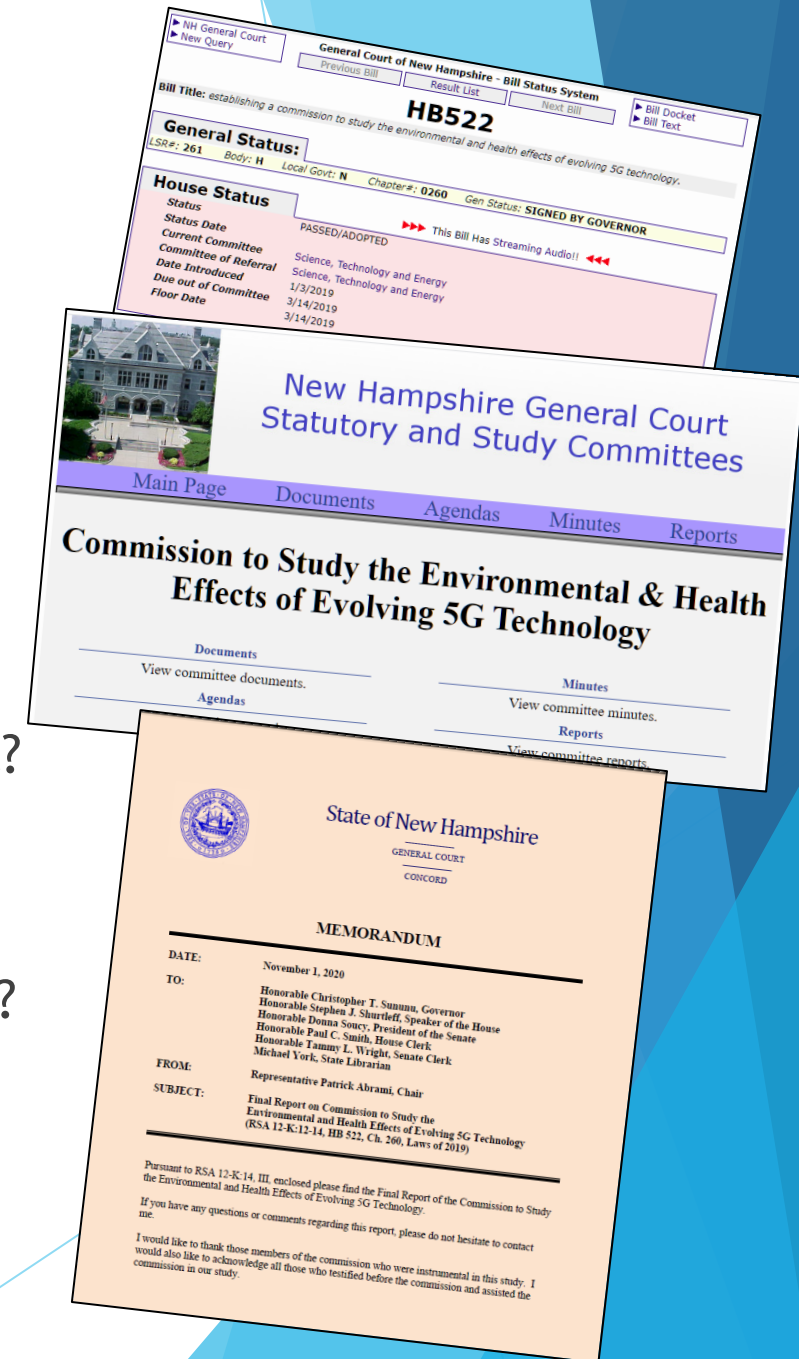
Verizon New York 2017 Financial Annual Report
Excerpt: Revenues, Expenses and Profits

Item (a)	Total (b)	Nonregulated (c)	New York Local Service (d)	Access (e)
7 Total Operating Revenues	4,988,070,423	1,516,034,818	1,077,981,833	2,394,053,772
Operating Expenses				
Plant Specific	2,444,833,098	1,087,065,800		
Plant Non-specific	440,183,010	55,415,000		
Corporate Operations	2,917,804,192	297,290,500		
Total Operating Expenses	7,578,159,182	1,645,881,000		
Net Operating Revenues	(2,592,088,769)	(172,846,182)		



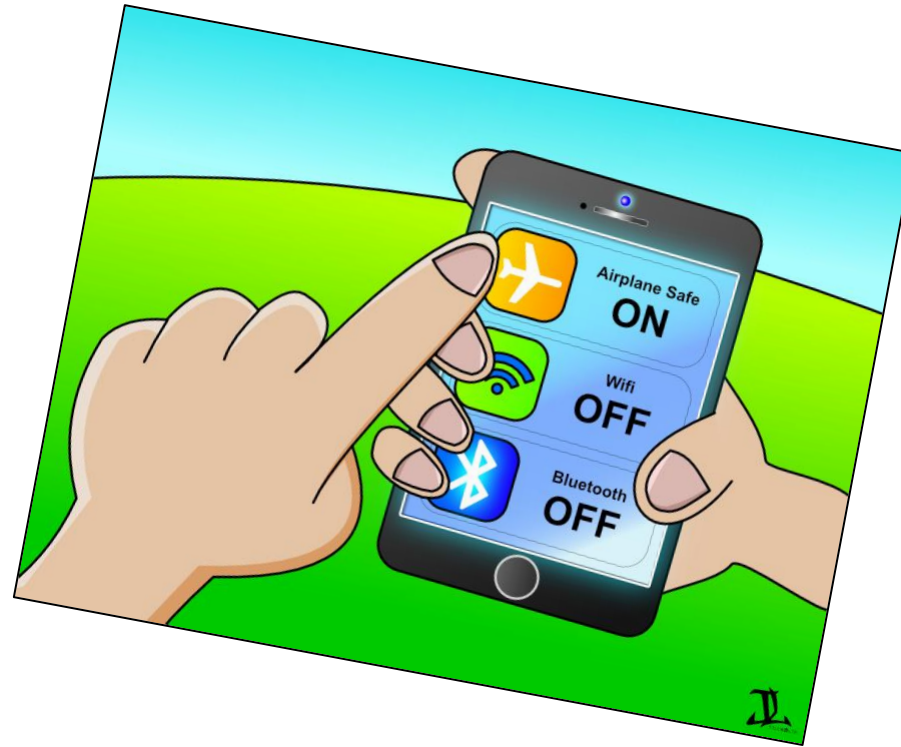
National Policy Solutions

- ▶ NH Rep. Patrick Abrami -- very pointed questions:
 - ▶ Why has the insurance industry put in RF exclusions?
 - ▶ Why does legal fine print say keep distance from the body?
 - ▶ Why are 1,000s of peer-reviewed studies ignored by FCC?
 - ▶ Why do FCC exposure limits not account for the non-thermal, non-ionizing, biological effects?
 - ▶ Why are US limits 100 times higher than other countries?
 - ▶ Why is the cumulative effect of increasing EMFs ignored?
- ▶ New Hampshire law in less than a year, groundbreaking Commission Report a year later

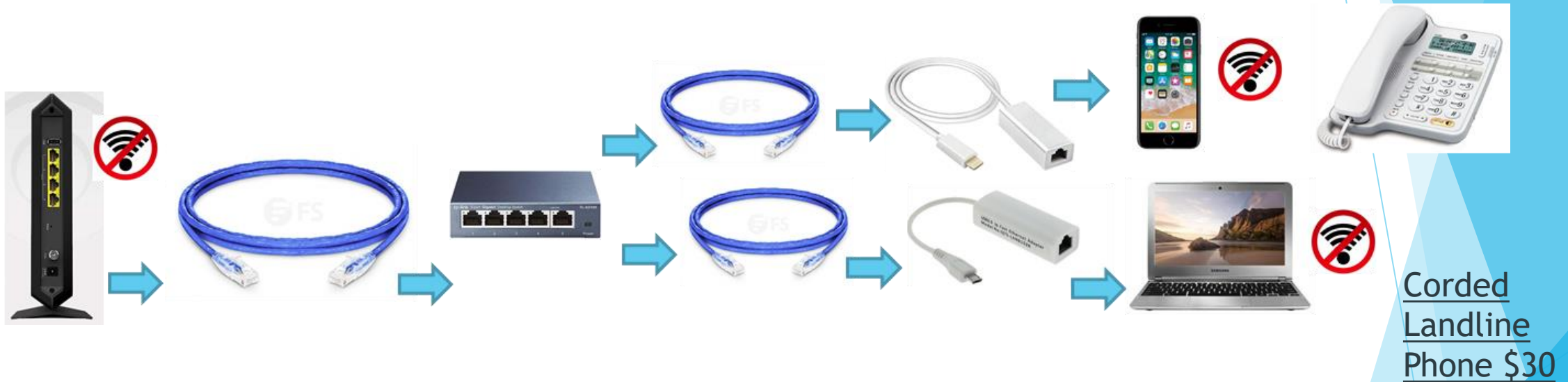


Personal Solutions: Easy & Legal

- ▶ *All devices off*
- ▶ Airplane mode
 - ▶ Cellular Off
 - ▶ Data Off
 - ▶ Wi-Fi Off
 - ▶ Bluetooth Off
 - ▶ Hotspot Off
- ▶ Second-hand radiation: people & pets



What Safe Technology Looks Like



Router

Shielded Ethernet Cable: Long @ \$30

Ethernet Switch @ \$20

Shielded Ethernet Cables: Short @ \$4-10

Cell Phone & Tablet Adapters @ \$30

Corded Landline Phone \$30

Professional Solutions

▶ Health Care Training

- ▶ [EMF Medical Conference](#)
- ▶ [Physicians for Safe Technology](#)

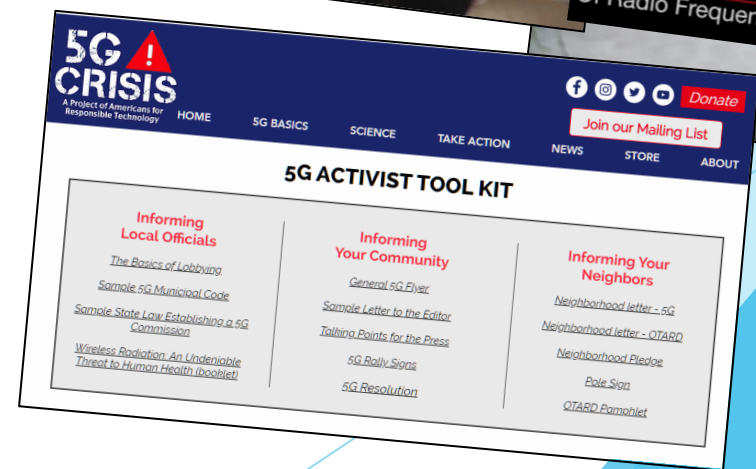
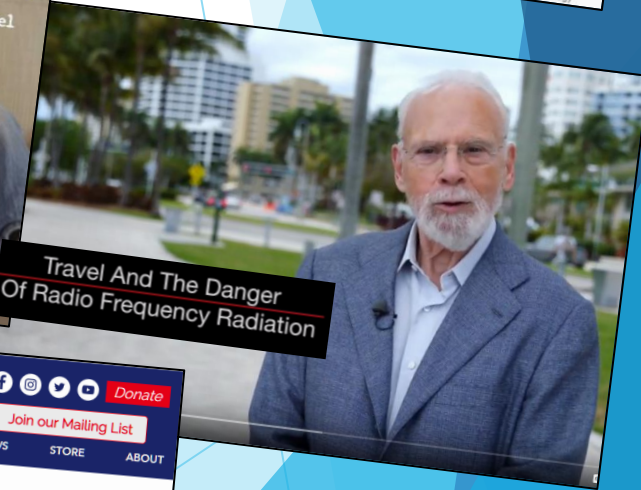
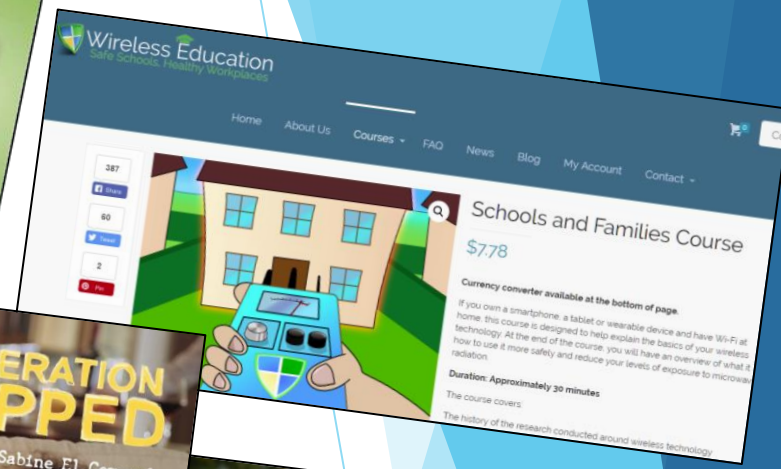
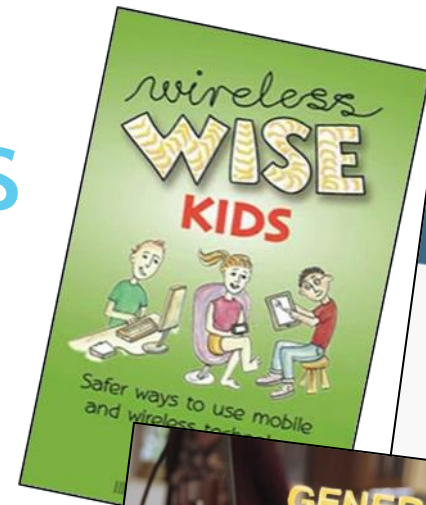


▶ Engineers, physicists, technologists, architects, etc.

- ▶ Clegg et al., [Building science and radiofrequency radiation: What makes smart and healthy buildings](#), Building and Environment, 2019
- ▶ IEEE Access: [Electromagnetic Radiation due to Cellular, Wi-Fi and Bluetooth technologies: How safe are we?](#) 2020
- ▶ Silicon Valley engineer [Jeremy Johnson TEDx Talk](#)

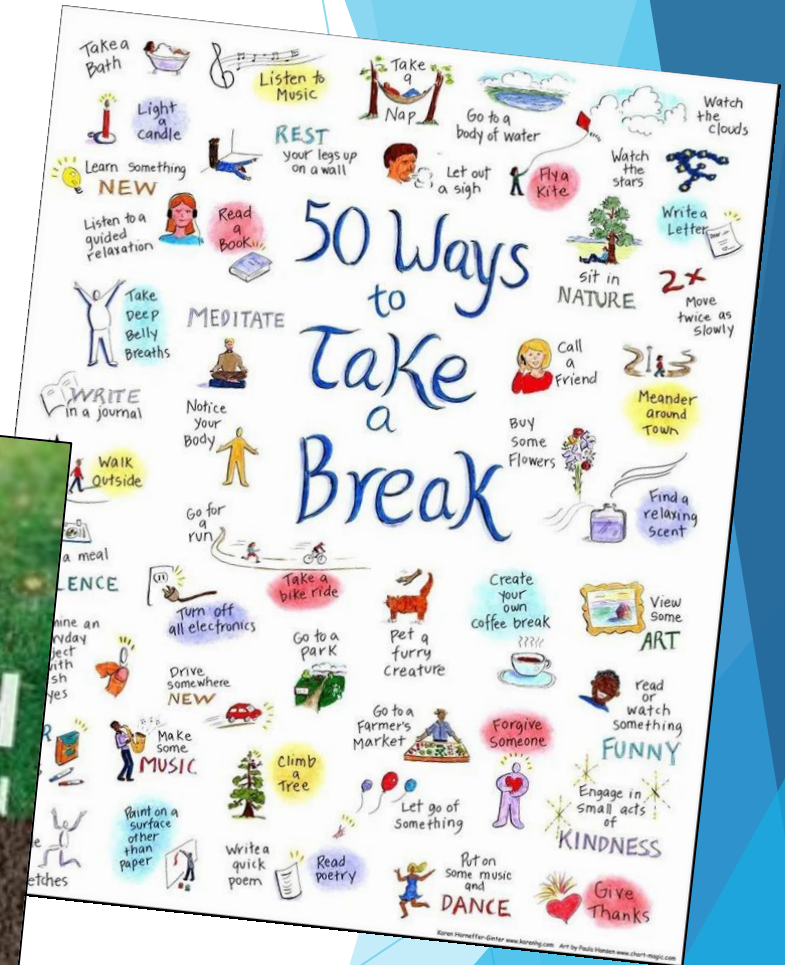
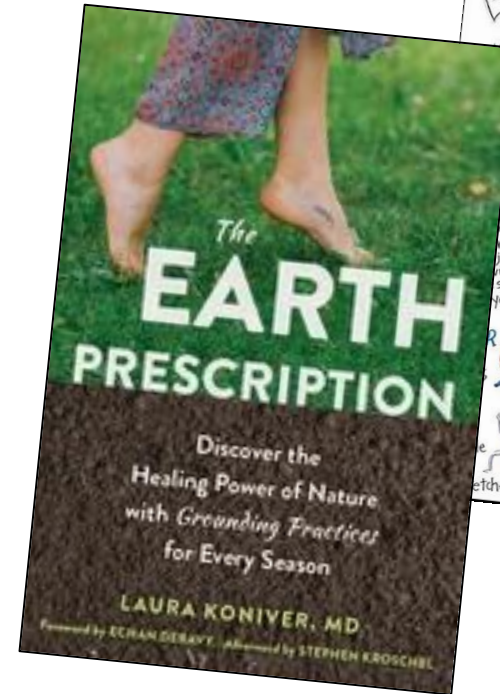
Home & Work Solutions

- ▶ [Wireless Wise Kids](#)
- ▶ Non-profit Wireless Education (@30 min. on-line)
 - ▶ [Schools & Families Course](#)
 - ▶ [Corporate Safety Course](#)
- ▶ Award-winning film [Generation Zapped](#)
- ▶ PBS Burt Wolf [1808](#) & [1809](#)
- ▶ 5GCrisis.com [Tool Kit](#)



Safe Tech Solutions: Physical & Mental Health

- ▶ Avoid excessive screen time
 - ▶ Set limits for yourself and children
 - ▶ Model good behavior
- ▶ 50 Ways to Take a Break
- ▶ The Earth Prescription



La Plata Next Steps

- ▶ Investigate:
 - ▶ Resources for [Municipal Leaders](#)
- ▶ Differentiate industry priorities vs. public's
- ▶ [ALARA](#), As Low As Reasonably Achievable (CDC)
- ▶ [Measure](#) vs. [biological effects](#)
 - ▶ [Building Biology Institute](#)

Understanding EMFs

Navigation
Introduction
The Science
Military Experts
Doubts
Cancers
Infertility
Impact on Children
WiFi in Schools
Electrosensitivity (ES)
Utility "Smart" Meters
Cell Towers
5G & IoT
Planetary Impact
Legal Issues
Manufacturers
For Health Care Providers
For Engineers & Physicians
For Municipal Leaders
Media Limitations
World Response
Solutions
Massachusetts EMF

For Municipal Leaders

This page is designed for public servants such as selectmen, town managers, mayors, governors, state representative, senators, zoning boards, planning boards, building inspectors, public health agents, school administrators, librarians, senior center directors and others in whose hands the public has entrusted their welfare.

- For an overview of the wireless radiation issue, you are welcome to see a presentation to a **four-town board in Massachusetts**. My talk begins at 3:27. Post-note: two of the towns have since adopted the Burlington, MA Small Cell Policy (discussed further down the page):
<https://www.youtube.com/watch?v=QYxUyWPHc20>
- The following document provides **links to the resources** presented. Please feel free to share widely:
<https://docs.google.com/viewer?a=v&pid=sites&srcid=ZGVmYXVzSGRvbnVubmRlcjE1bWVzZmV1mc3RneDozNmEiN2Y4MjEmYjI0Tj>

The Issue: **Wireless Technology is Biologically Hazardous**

In 2018 the **U.S. National Toxicology Program** reported findings from a **16-year \$30M study** on wireless radiation, specifically, 2G and 3G cell phone radiation on rodents. Similar findings have been reported in **4G studies** as well. Here are

SAFE LIVING Technologies Inc.
Creating Healthy Living Spaces
7 Clair Road West, P.O. Box 27051, Guelph, ON, N1L 0A6 • Tel 519.240.8735
support@slt.co • www.slt.co

RADIOFREQUENCY / MICROWAVE EXPOSURE GUIDELINES
(High Frequency Electromagnetic Waves)

1) **BUILDING BIOLOGY PRECAUTIONARY GUIDELINES (SBM-2015) For Sleeping Areas**

Power density	No Concern	Slight Concern	Severe Concern	Extreme Concern
microWatts per square meter $\mu\text{W}/\text{m}^2$	< 0.1	0.1 - 10	10 - 1000	> 1000
microWatts per square cm $\mu\text{W}/\text{cm}^2$	< 0.000.01	0.000.01 - 0.001	0.001 - 0.1	> 0.1
milliWatts per square meter mW/m^2	< 0.000.1	0.000.1 - 0.01	0.01 - 1	> 1
Signal strength				
Volts per meter V/m	< 0.006.14	0.006.14 - 0.061.4	0.061.4 - 0.614	> 0.614

2) **BIOINITIATIVE REPORT PRECAUTIONARY GUIDELINES (2007 - 2012)** www.bioinitiative.org/
Dr. Martin Blank - Columbia University
 $< 1.000 \mu\text{W}/\text{m}^2$ or $0.1 \mu\text{W}/\text{cm}^2$

Building Biology Institute
The science of healthy buildings

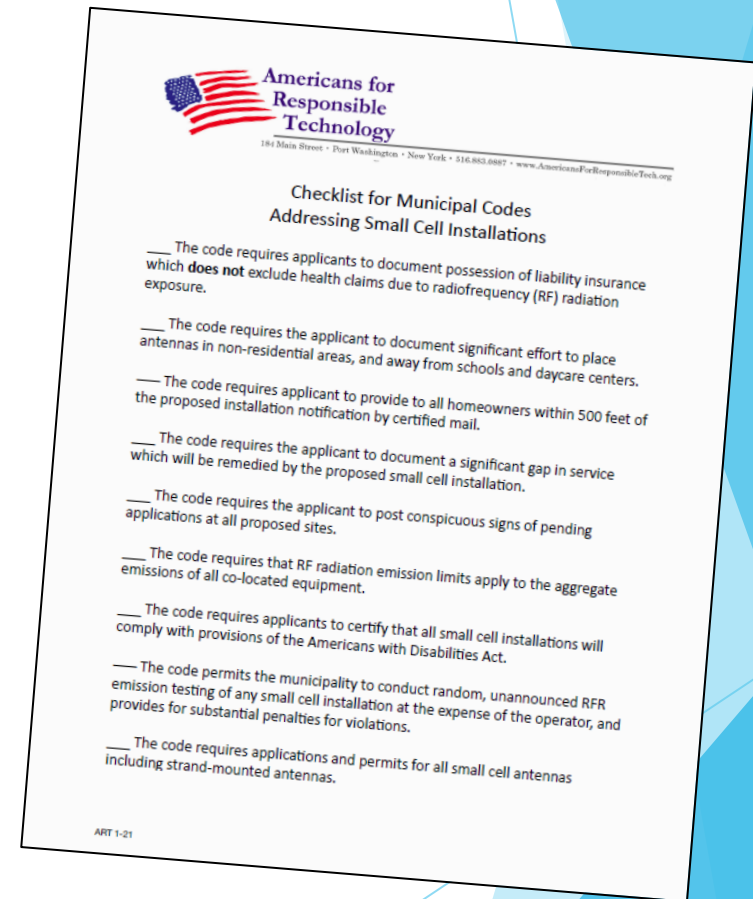
COURSES CERTIFICATIONS SEMINARS ABOUT MEMBERSHIP RESOURCES

Electromagnetic Radiation Specialists
EMRS

Electromagnetic Radiation Specialists complete a rigorous training regimen which includes hands-on training in advanced electromagnetic radiation, and natural healthy building subjects. But are not BBI-certified to address indoor air quality issues (unless IAQ-certified by an authorized third party).

La Plata Next Steps

- ▶ Significant **telecom code amendments** to map antennas, monitor emissions, [5GCrisis.com tool kit](https://www.5GCrisis.com)
 - ▶ Notify public by certified mail in advance, esp. EMS-disabled
 - ▶ Create low-RF safe zones
 - ▶ CityScape, Inc., to do a wireless master plan
- ▶ **Update Building Code** to comply with ADA
- ▶ EMS-safe affordable **housing & transition shelters**



La Plata Next Steps

- ▶ EMS Community Education
 - ▶ Municipality
 - ▶ [Reinventing Wires: The Future of Landlines and Networks](#) (Schoechle)
 - ▶ Wireless Education [Corporate Course](#)
 - ▶ [EMF Medical Conference](#)
 - ▶ Public Safety: Fire & Rescue, Police
 - ▶ Health Care Providers



La Plata Next Steps

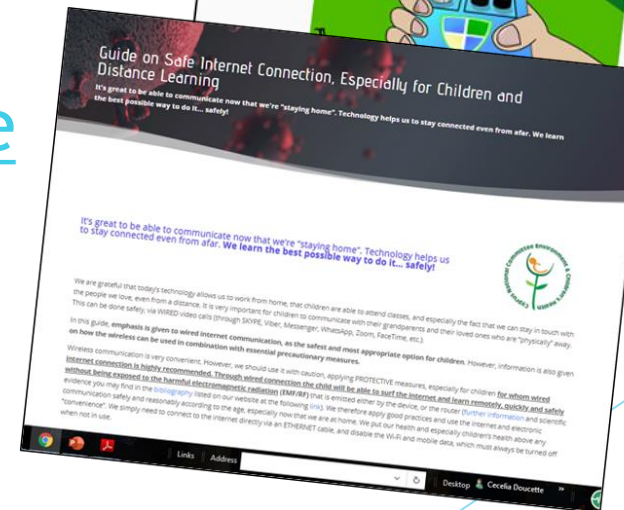
▶ EMS Community Education

▶ Schools: Train ASAP

▶ TechSafe Schools

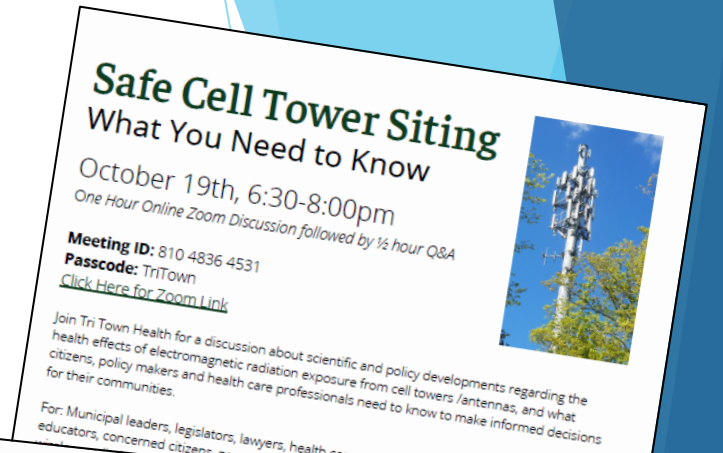
▶ Wireless Education's Schools & Families Course

▶ Cyprus Guidelines



La Plata Next Steps

- ▶ Educate community
 - ▶ Sponsor [public/regional forums](#)
 - ▶ Engage professional associations (MASC, MASBO, MMA, MTA, DESE, IBEW, etc.)
- ▶ Contact [legislators](#)
- ▶ Sign FTTP petition, contact LPEA




Safe Cell Tower Siting
What You Need to Know

October 19th, 6:30-8:00pm
One Hour Online Zoom Discussion followed by 1/2 hour Q&A

Meeting ID: 810 4836 4531
Passcode: TriTown
[Click Here for Zoom Link](#)

Join Tri Town Health for a discussion about scientific and policy developments regarding the health effects of electromagnetic radiation exposure from cell towers /antennas, and what citizens, policy makers and health care professionals need to know to make informed decisions for their communities.

For: Municipal leaders, legislators, lawyers, health care professionals, school administrators and educators, concerned citizens, parents, neighbors and associations.



PLEASE JOIN US FOR A CRITICAL COMMUNITY CONVERSATION:
WIRELESS TECHNOLOGY RISKS & SAFER MUNICIPAL SOLUTIONS

MONDAY, MARCH 8, 11 A.M. – 1 P.M. MST
LA PLATA COUNTY EDUCATIONAL FORUM
PLEASE JOIN VIA ZOOM: [HTTPS://US02WBN.ZOOM.US/J/819094582](https://us02wbn.zoom.us/j/819094582)

The U.S. National Toxicology Program has found cell phone radiation causes cancer and DNA damage. Additional [peer-reviewed, published studies](#) link wireless radiation to our growing rates of insomnia, headaches, nose bleeds, nausea, pain, cognitive impairment, fatigue, behavior issues, learning disabilities, autism, anxiety, depression, suicidal ideation, neurotoxicity, digital addiction, infertility, and more. This type of radiation is constantly pulsed from our wifi devices, routers, smart utility meters, cell towers and the new close-range 4G/5G small cell antennas – unless we develop strategies to use technology safely.

Join leading experts to learn the science, risks – and safe technology solutions for La Plata:

- [Cece Doucette, MTPW, Technology Safety Educator, introduced legislation](#) and helped her schools become the [first in the nation](#) to safeguard students and staff
- [Timothy Schoeble, PhD, Prof. Emeritus CU and CSU, telecommunications and staff](#)
- [Author of Reinventing Wires: The Future of Landlines and Networks](#)
- [Sheena Symington, B.Sc., MA, Director, Electro Sensitive Society](#)
- [Virginia Farver, advocate and parent of son who died of brain cancer from a cell tower on school campus, petitioner with Children's Health Defense vs. FCC lawsuit](#)
- [Coloradans and La Plata for safe technology members](#)

In preparation we suggest you:

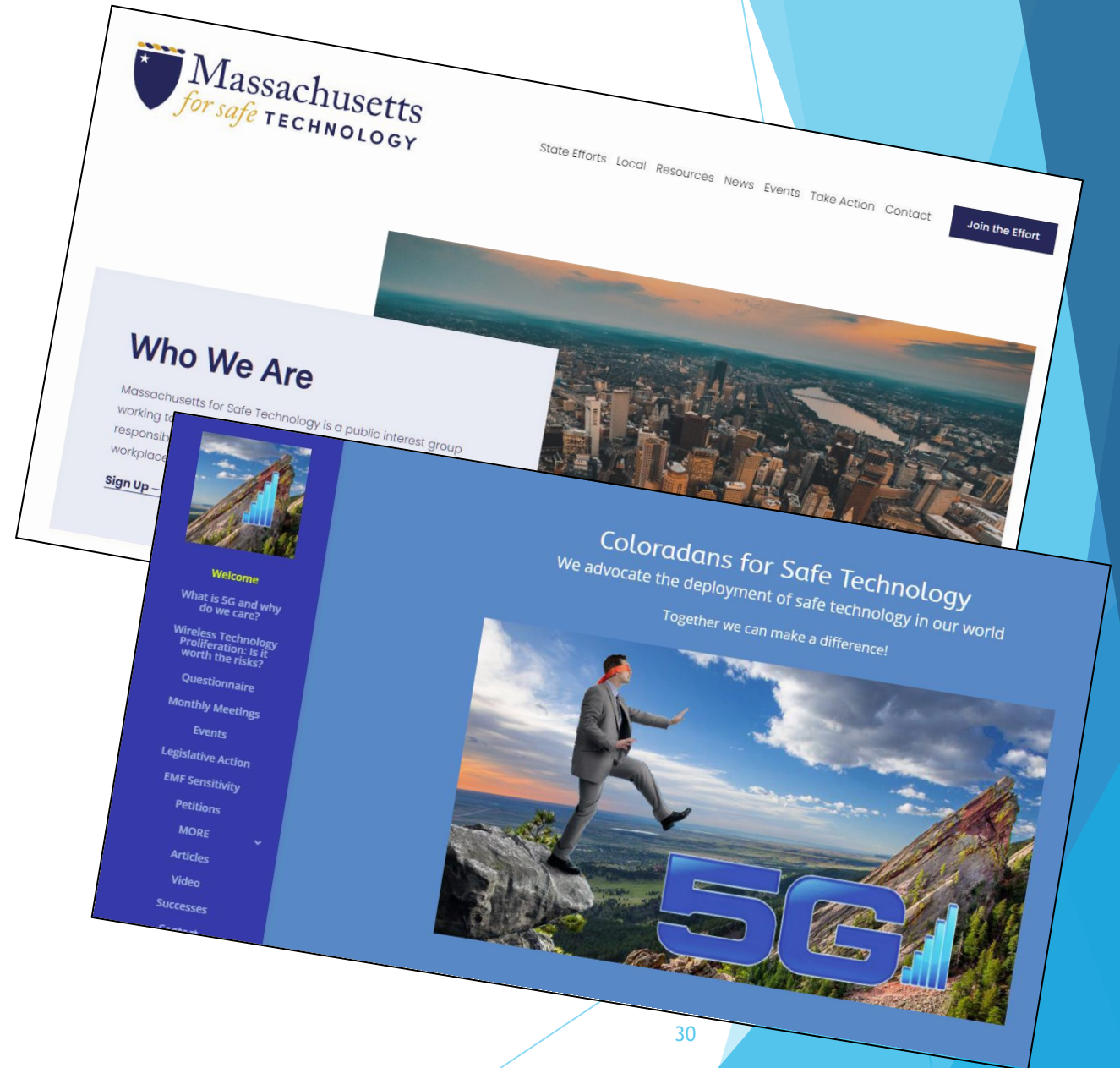
- Watch the award-winning film [Generation Zapped](#) (free if your library subscribes to [iView](#) or [Hulu](#), or download for a small fee [here](#)) and/or
- Take the quick [Schools & Families Course](#) from the non-profit Wireless Education

IF YOU ARE UNABLE TO ATTEND BUT WOULD LIKE TO JOIN ANOTHER CONVERSATION, OR PERHAPS HOST ONE OF YOUR OWN, PLEASE CONTACT CECE AT [CECE@WECOL.ORG](mailto:cece@wecol.org). THANK YOU!

Jon Minn of Hilltown
regarding municipal
formation
[alth.org](mailto:info@alth.org)
[ns@gmail.com](mailto:info@gmail.com)

Thank You!

- ▶ Contact Cece:
 - ▶ [Massachusetts for Safe Technology](#)
 - ▶ MA4SafeTech@gmail.com
 - ▶ [WirelessEducation.org](#)
- ▶ Contact Coloradans
 - ▶ [La Plata for Safe Technology](#)
 - ▶ [Coloradans for Safe Technology](#)



Andrea's Son Ian

- ▶ EMS-disabled child



- School exposures
- Sedona headache followed by seizure